

ALL FLANGES RATED AT 150#

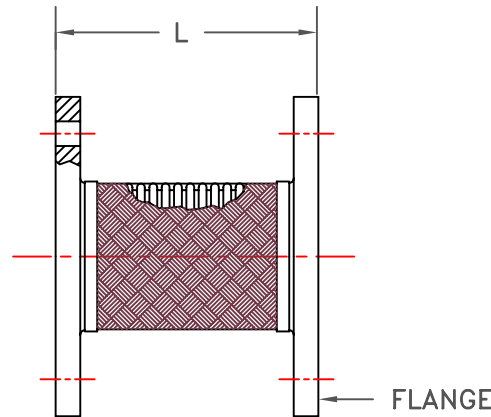
MATERIALS

PIPE ENDS: CARBON STEEL

CORRUGATED HOSE: 321 STAINLESS WITH
304 STAINLESS BRAIDED SHEATH

NOM SIZE	LENGTH-L	PIPE FLANGE	LATERAL OFFSET		WORKING PRES.-PSI (BAR)		APPROX SHIP WEIGHT
			INTERMITTENT	PERMANENT	⑦0 deg F	③00 deg F	
2 x 9	9 (229)	0.68 (17)	0.13 (3)	0.38 (9)	455 (31.4)	400 (27.6)	9 (4.0)
2.5 x 9	9 (229)	0.75 (19)	0.13 (3)	0.38 (9)	345 (23.8)	303 (20.9)	13 (6.0)
3 x 9	9 (229)	0.88 (22)	0.13 (3)	0.38 (9)	289 (19.9)	254 (17.5)	14 (6.4)
4 x 9	9 (229)	0.88 (22)	0.13 (3)	0.38 (9)	300 (20.7)	264 (18.2)	18 (8.2)
5 x 11	11 (279)	0.88 (22)	0.13 (3)	0.38 (9)	220 (15.2)	193 (13.3)	25 (11.4)
6 x 11	11 (279)	1.00 (25)	0.13 (3)	0.38 (9)	200 (13.8)	176 (12.1)	28 (12.7)
8 x 12	12 (305)	1.06 (27)	0.13 (3)	0.38 (9)	190 (13.1)	167 (11.5)	52 (23.6)
10 x 13	13 (330)	1.06 (27)	0.13 (3)	0.38 (9)	165 (11.4)	145 (10.0)	65 (30.0)
12 x 14	14 (356)	1.12 (28)	0.13 (3)	0.38 (9)	125 (8.6)	110 (7.6)	105 (48.0)
14 x 14	14 (356)	1.12 (28)	0.13 (3)	0.38 (9)	105 (7.2)	92 (6.3)	115 (52.0)

PSI (BAR) PSI (BAR) LBS (KG)



KINFLEX BFMC-FFF

ALL DIMS IN INCHES (MM) EXCEPT AS NOTED

TAG	QTY	PIPE SIZE

Drawn By: PWM Date: 02/06/03 Approved By:

Checked By: Scale: None

 Drawing No.: S-05.05-01G

WARNING: Control Units Must Be Used To Protect This Part From Excessive Movement If Piping Is Not Properly Anchored. Precautions Should Be Taken To Protect Personnel In The Event Of Leakage Or Splash.

Proposal/Inquiry/Order Number:

Customer Name:

Project Name:

Architect/Engineer:

Contractor:

DATE:

REMARKS: